

滾筒力參數	q	M	N
YSS80	0.0039	9.5	4.5
YSS100	0.0045	11	5

CONVEYOR BASIC SPECIFICATION
自動人行道基本參數

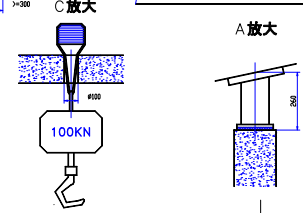
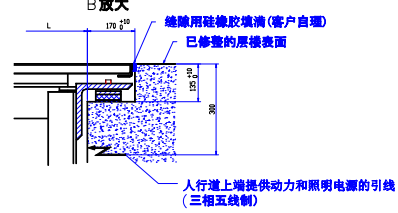
Order No.	No. of Lifts
YSS80	HS300
YSS100	S-B

REMARKS 注意事項

- In the case of the double drives system request, base must be extended by 417mm.
- In the case of side panels provided to each roller app should be maintained by putting both ends together leaving a minimum gap of 10 mm and according to the sizes of side.
- Requirement to Power: 200V, 3-Phase 50Hz, max voltage deviation allowed ±7%.

支撐力		
无中間支撐	單中間支撐	雙中間支撐
$R=L*q*M$	$R=L*q*M$	$R=L*q*M$
$R=L*q*N$	$S_1=(L+L_b)*q*1.3$	$S_2=(L+L_c)*q*1.3$

傾角	提升高度		中間支撐		L _a	L _b	L _c
	高	寬	S1	S2			
10°	1273	2154	-	-	-	-	-
	2155	3388	1	-	7000	L-7000	-
	3389	4799	1	-	L-15000	15000	-
	4800	6300	1	1	7000	15000	L-22000
	1423	2394	-	-	-	-	-
11°	2395	3754	1	-	7000	L-7000	-
	3755	5309	1	-	L-15000	15000	-
	5310	6000	1	1	7000	15000	L-22000
12°	1572	2634	-	-	-	-	-
	2635	4122	1	-	7000	L-7000	-
	4123	5822	1	-	L-15000	15000	-
	5823	6000	1	1	7000	15000	L-22000



借(通) 用件登記

繪圖

繪核

底圖號

使用節距為266mm的除板

The client hereby agrees to the specification and dimensions per drawing.

客戶特此同意規格及尺寸按圖樣。

Approval: By the Responsible By the Firm

核准: 負責工程師 公司

Reconfirmation is Necessary for Later Assemblies. 後續安裝時須重新確認。

Constructional Arrangement: 附 Drawing No. 結構佈局圖

Page: 1 of 1

Drawn: 蘇州漢森電梯有限公司

Checked: 蘇州漢森電梯有限公司

Approved: 蘇州漢森電梯有限公司

Date: 蘇州漢森電梯有限公司